

# MAE MANUFACTURERS cc

MANUFACTURERS OF THE MAE FLAMEPROOF ALTERNATOR AND ELECTRICAL FLAMEPROOF EQUIPMENT

REG NO: CK 95/47371/23 VAT NO: 447 011 0034

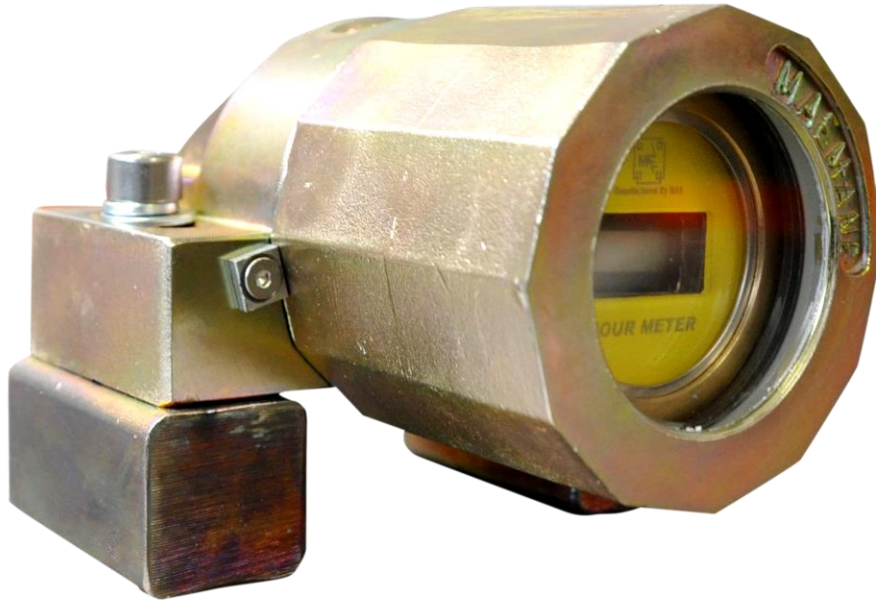
Tel: +27 (11) 421 5551

Fax: +27 (11) 421 5618

E-mail: [orders@maesa.co.za](mailto:orders@maesa.co.za) / [admin@maesa.co.za](mailto:admin@maesa.co.za)

## MAE Flameproof Hour Meter

Part No: MAEFLH



### Product Features

- ❖ 12 or 24 Volts.
- ❖ NOT Susceptible to Vibrations.
- ❖ Digital
- ❖ No Enclosure Replacement As All Components Are Interchangeable.



# MAE MANUFACTURERS cc

MANUFACTURERS OF THE MAE FLAMEPROOF ALTERNATOR AND ELECTRICAL FLAMEPROOF EQUIPMENT

REG NO: CK 95/47371/23 VAT NO: 447 011 0034

Tel: +27 (11) 421 5551

Fax: +27 (11) 421 5618

E-mail: [orders@maesa.co.za](mailto:orders@maesa.co.za) / [admin@maesa.co.za](mailto:admin@maesa.co.za)

## Technical Specifications

**Voltage** 12V or 24V

**Certificate** MASC M/13-644X (RSA)  
ANZEx 14.4135X (AUS)  
CML 14 ATEX 1022 (EUROPE)

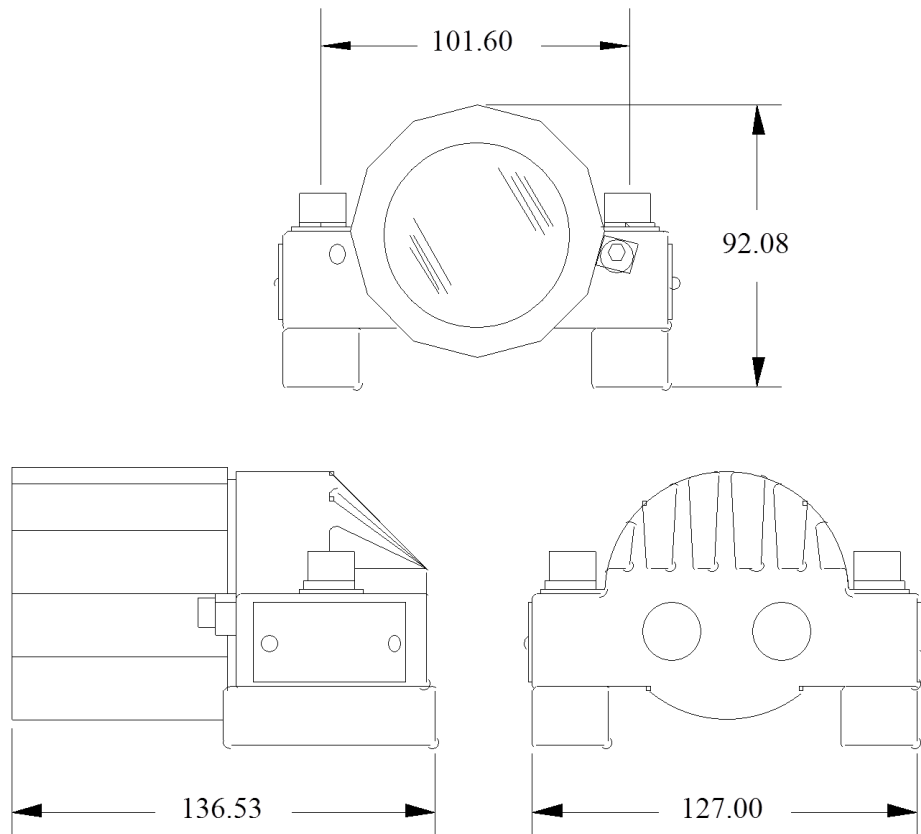
**Weight** 5kg

**Overall Length** 136.5mm

**Overall Width** 127mm

**Overall Height** 92mm

**Overall Diameter** 86mm



# MAE MANUFACTURERS cc

MANUFACTURERS OF THE MAE FLAMEPROOF ALTERNATOR AND ELECTRICAL FLAMEPROOF EQUIPMENT















REG NO: CK 95/47371/23 VAT NO: 447 011 0034

Tel: +27 (11) 421 5551

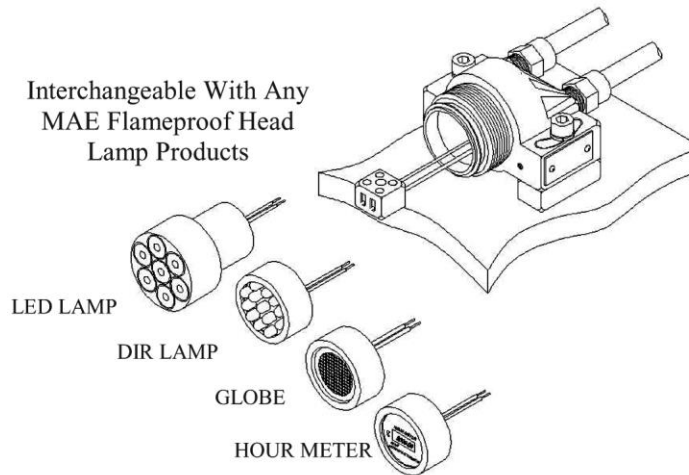
Fax: +27 (11) 421 5618

E-mail: [orders@maesa.co.za](mailto:orders@maesa.co.za) / [admin@maesa.co.za](mailto:admin@maesa.co.za)

## Application

 SCOOP		 QUARRY VEHICLES		 LONG WALL SHIELD	
 CONTINUOUS MINER		 SHUTTLE CAR		 HAULAGE	
 DUMP TRUCK		 DRILLS		OTHER APPLICATIONS	

## Interchangeable Inners



## Disclaimer

*The information in this specification is derived from the latest model available at the time of issue 1.0. While every precaution has been taken to ensure the accuracy of the content, no responsibility can be accepted for any errors or omissions nor any misinterpretation or misapplication. MAE has adopted a continuous product improvement policy and therefore, specifications are subject to change without prior notice © September 2009 MAE all rights reserved.*



# FLAMEPROOF HEAD LIGHT

MODEL: 1A

DIR CHART	
GREEN BLUE	MFLGED/GB
GREEN RED	MFLGED/GR
GREEN	MFLGED/G
RED	MFLGED/R
GREEN FLASH	MFLGED/GF
RED FLASH	MFLGED/RF
AVAILABLE IN	12, 24, 110 & 220V

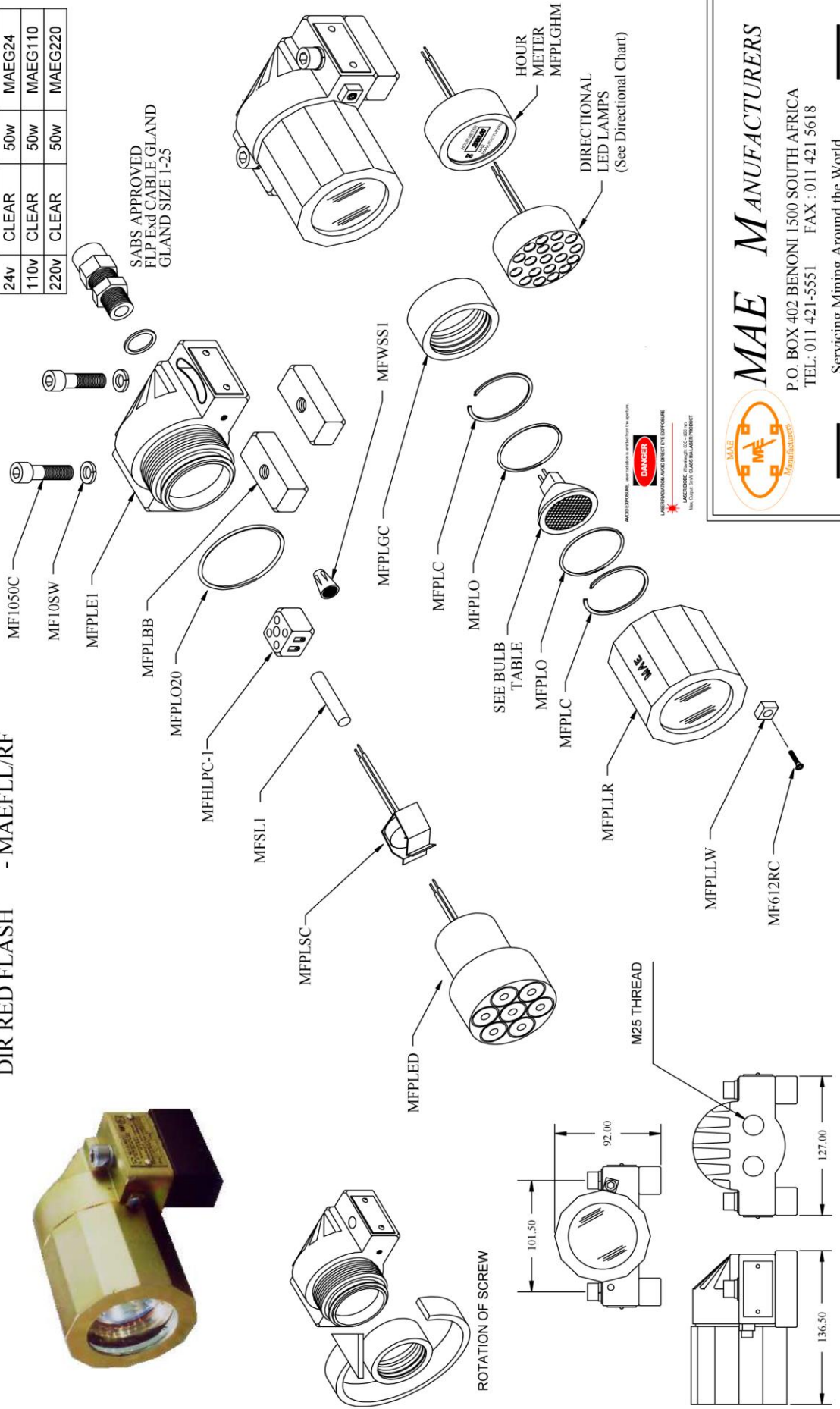
PART NO. :  
 HEAD LIGHT - MAEFL001224  
 LED HEAD LAMP - MAEFLD  
 DIR GREEN - MAEFLG/G  
 DIR RED - MAEFLR/R  
 DIR GREEN FLASH - MAEFLG/GF  
 DIR RED FLASH - MAEFLR/RF

PART NO. :  
 DIR GREEN RED - MAEFL/GR  
 DIR GREEN BLUE - MAEFL/GB  
 HOUR METER - MAEFLH

Ex dI 150°C

**BULB TABLE**

12v	CLEAR	50w	MAEG12
12v	YELLOW	50w	MAEG12G
12v	GREEN	50w	MAEG12G
12v	RED	50w	MAEG12R
24v	CLEAR	50w	MAEG24
110v	CLEAR	50w	MAEG110
220v	CLEAR	50w	MAEG220



**MAE MANUFACTURERS**  
 P.O. BOX 402 BENONI 1500 SOUTH AFRICA  
 TEL: 011 421-5551 FAX : 011 421 5618  
 Servicing Mining Around the World